



ARHGAP1 Polyclonal Antibody

Catalog No	YP-Ab-16130
Isotype	IgG
Reactivity	Human;Mouse
Applications	WB;IHC;IF;ELISA
Gene Name	ARHGAP1
Protein Name	Rho GTPase-activating protein 1
Immunogen	The antiserum was produced against synthesized peptide derived from human RHG1. AA range:189-238
Specificity	ARHGAP1 Polyclonal Antibody detects endogenous levels of ARHGAP1 protein.
Formulation	Liquid in PBS containing 50% glycerol, 0.5% BSA and 0.02% sodium azide.
Source	Polyclonal, Rabbit,IgG
Purification	The antibody was affinity-purified from rabbit antiserum by affinity-chromatography using epitope-specific immunogen.
Dilution	WB: 1/500 - 1/2000. IHC: 1/100 - 1/300. ELISA: 1/10000.. IF 1:50-200
Concentration	1 mg/ml
Purity	≥90%
Storage Stability	-20°C/1 year
Synonyms	ARHGAP1; CDC42GAP; RHOGAP1; Rho GTPase-activating protein 1; CDC42 GTPase-activating protein; GTPase-activating protein rhoOGAP; Rho-related small GTPase protein activator; Rho-type GTPase-activating protein 1; p50-RhoGAP
Observed Band	50kD
Cell Pathway	Cytoplasm.
Tissue Specificity	Ubiquitous.
Function	function:GTPase activator for the Rho, Rac and Cdc42 proteins, converting them to the putatively inactive GDP-bound state. Cdc42 seems to be the preferred substrate.,similarity:Contains 1 CRAL-TRIO domain.,similarity:Contains 1 Rho-GAP domain.,subunit:Found in a complex with XPO7, EIF4A1, ARHGAP1, VPS26A, VPS29, VPS35 and SFN. Interacts with BNIPL.,tissue specificity:Ubiquitous.,
Background	This gene encodes a member of a large family of proteins that activate Rho-type guanosine triphosphate (GTP) metabolizing enzymes. The encoded protein contains a SRC homology 3 domain and interacts with Bcl-2-associated protein family members. [provided by RefSeq, Aug 2012],



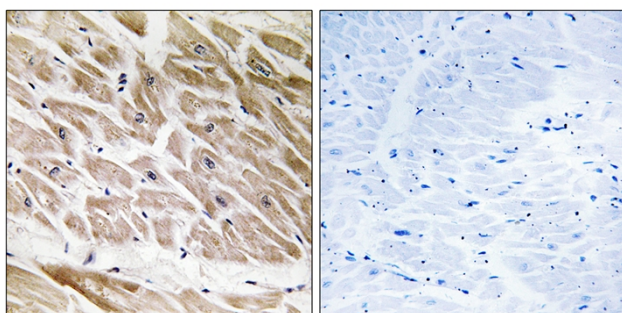
matters needing attention

Avoid repeated freezing and thawing!

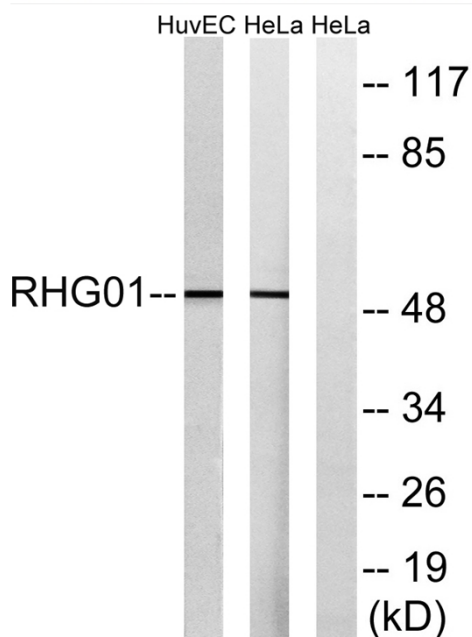
Usage suggestions

This product can be used in immunological reaction related experiments. For more information, please consult technical personnel.

Products Images



Immunohistochemistry analysis of paraffin-embedded human heart tissue, using RHG1 Antibody. The picture on the right is blocked with the synthesized peptide.



Western blot analysis of lysates from HeLa and HUVEC cells, using RHG1 Antibody. The lane on the right is blocked with the synthesized peptide.